

JBC

www.jbctools.com

English



1 Tool Control Unit

Ref. DI-D

Packing List

The following items should be included:

DI Control Unit 1 unit

Power Cord 1 unit

DI Control Unit
Ref. DI-1D (120V)
DI-2D (230V)
DI-9D (100V)



Power Cord
Ref. 0009417 (100V/120V)
0009401 (230V)



Manual



Features

For a basic working system, you need 1 control unit, 1 stand, 1 tool and 1 cartridge.

DI Control Unit

- Ref. DI-1D (120V)
- DI-2D (230V)
- DI-9D (100V)



Power Cord Socket

Compatible modules

- Ref. MS, MV, MN, FS



Compatible stands

- Ref. AD-SD, PA-SD, AP-SD, HT-SD, DS-SD, DR-SD, DN-SD



Compatible tools

- Ref. T210, T245, T245-NA, PA120, AP130, HT420, DS360, DR560



USB Connector

Download the latest softwares from our website to improve your soldering station.

JBC Updater

www.jbctools.com/software.html

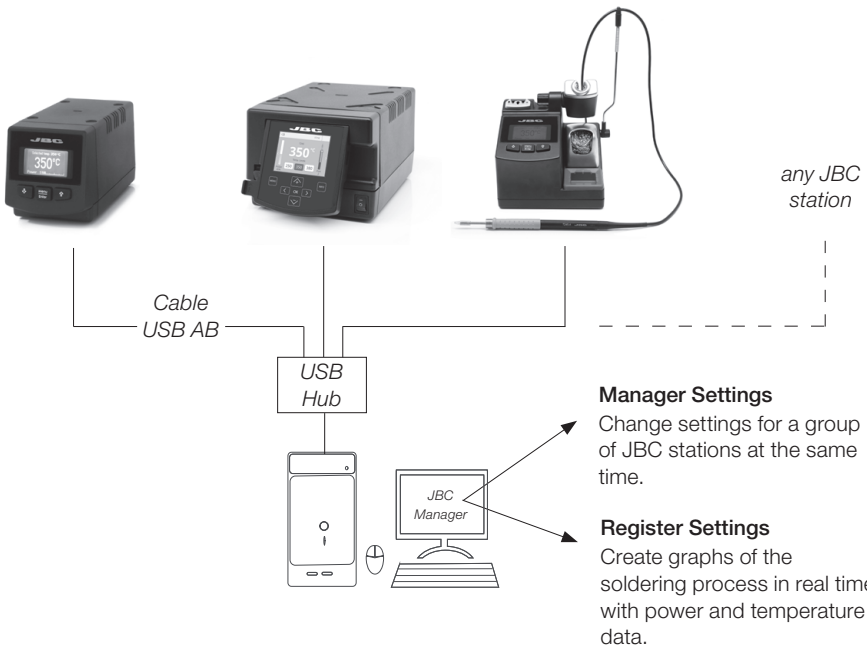
Update the station software via USB connection:



JBC Manager

www.jbctools.com/manager.html

Manage and monitor as many stations as your Windows PC supports by using the JBC Manager. You can export data to another PCs.



Operation

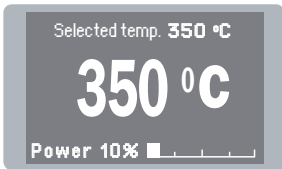
The JBC Exclusive Heating System

This revolutionary technology is able to recover the tip temperature extremely quickly. This allows the user to work at a lower temperature. As a result, the tip life increases x5 times.

1. Work

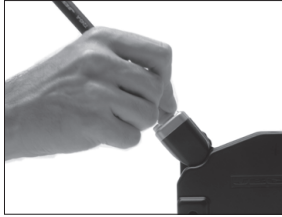


Lift tool from the stand and the tool tip will heat up to the selected temperature.



- Change temperature (from 90 to 450°C)
- Set temperature limits
- Select temperature levels
- Fix one temperature

2. Sleep

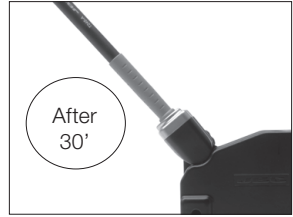


When the tool is in the stand, the temperature reduces to 180°C / 360°F (preset sleep temperature).



- Change Sleep temperature
- Set Sleep delay (from 0 to 9 min or no Sleep)

3. Hibernation



After longer periods of inactivity (pre-set to 30 minutes), the power is cut off and the tool cools down to room temperature.

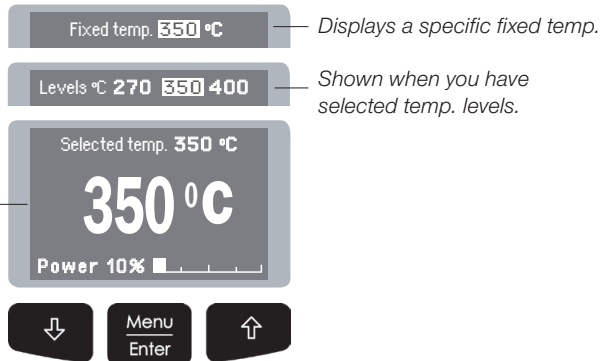


- Set Hibernation delay (from 0 to 60 min or no hibernation)

Process Control

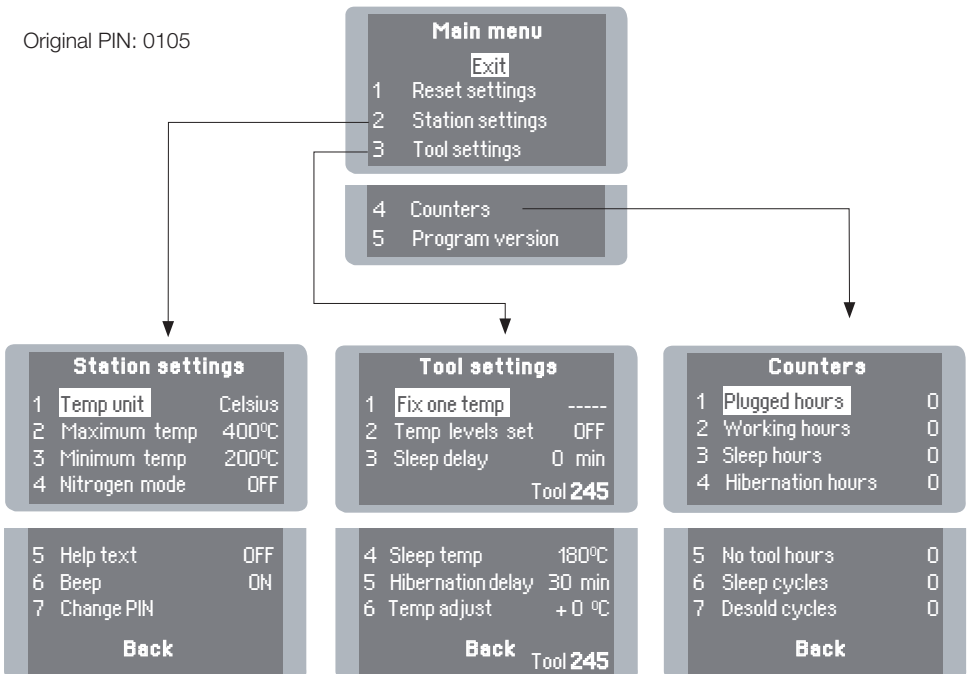
Work Screen

The work screen provides useful information of tool status in real time.



Menu Screen

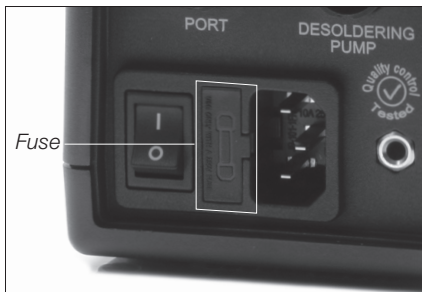
Original PIN: 0105



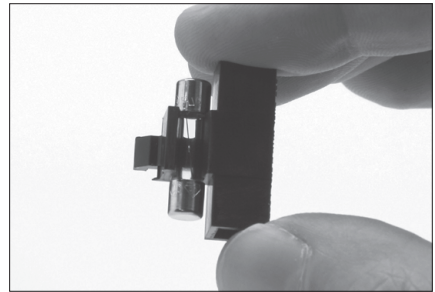
Maintenance

Before carrying out maintenance or storage, always allow the equipment to cool.

- Clean the station's screen with a glass cleaner or a damp cloth.
- Use a damp cloth to clean the casing and the tool. Alcohol can only be used to clean the metal parts.
- Check periodically that the metal parts of the tool/stand are clean so that the station can detect when the tool is in the stand.
- Maintain tip surface clean and tinned prior to storage in order to avoid tip oxidation. Rusty and dirty surfaces reduce heat transfer to the solder joint.
- Periodically check all cable connections.
- Replace the fuse if it is blown according to the following guidelines:



Remove the fuse by pulling the black cap.
If necessary use a tool to lever it off.



Press the new fuse into the holder and
replace it in the station.

- Replace any defective or damaged pieces. Use original JBC spare parts only.
- Repairs should only be performed by a JBC authorized technical service.

Safety



It is imperative to follow safety guidelines to prevent electric shock, injury, fire or explosion.

- Do not use the units for any purpose other than soldering or rework. Incorrect use may cause fire.
- The power cord must be plugged into approved bases. Be sure that it is properly grounded before use. When removing it, hold the plug, not the wire.
- Do not work on electrically live parts. Antistatic handle of soldering irons is electrically conductive.
- The tool should be placed in the stand when not in use in order to activate the sleep mode. The soldering tip, the metal part of the tool and the stand may still be hot even when the station is turned off. Handle with care, including when adjusting the stand position.
- Do not leave the appliance unattended when it is on.
- Do not cover the ventilation grills.
- Heat can cause inflammable products to ignite even when out of sight.
- Use a "non residue" classified flux and avoid contact with skin or eyes to prevent irritation.
- Be careful with the fumes produced when soldering.
- Keep your workplace clean and tidy. Wear appropriate protection glasses and gloves when working to avoid personal harm.
- Utmost care must be taken with liquid tin waste which can cause burns.
- This appliance can be used by children over the age of eight and also persons with reduced physical, sensory or mental capabilities or lack of experience provided that they have been given adequate supervision or instruction concerning use of the appliance and understand the hazards involved. Children must not play with the appliance. Maintenance shall not be carried out by children unless supervised.

Exploded View

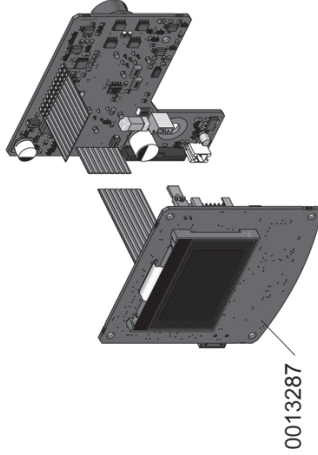
DI-1D 120V
 DI-2D 230V
 DI-9D 100V

1 TOOL CONTROL UNIT

DI-1D / DI-2D / DI-9D

SPARE PARTS	
DI-1D / DI-2D / DI-9D:	
-CIRCUIT	0013287
-ENCLOSURE	
· TOP	0011435
· BOTTOM	0007544
· FRONT	0013830
· BACK	0003506

DI-1D 120V FUSE T-2A
 DI-2D 230V FUSE T-1A
 DI-9D 100V FUSE T-2,5A



Specifications

DI-1D 120V 50/60Hz. Input fuse: 2A. Output: 23.5V.

DI-2D 230V 50/60Hz. Input fuse: 1A. Output: 23.5V.

DI-9D 100V 50/60Hz. Input fuse: 2.5A. Output: 23.5V.

- Total unit weight: 2 kg (4.3 lb)
- Size: 90 x 105 x 180 mm
- Temperature selection from 90°C (190°F) to 450°C (840°F)
- Output Peak Power: 130W
- Tip to ground resistance: <2 ohms
- Ambient operating temp: 10-40 °C / 50-104 °F
- USB connector station-PC
- Complies with CE standards
- ESD protected housing "skin effect"

JBC

Warranty

JBC's 2 year warranty covers this equipment against all manufacturing defects, including the replacement of defective parts and labour.

Warranty does not cover product wear due to use or mis-use.

In order for the warranty to be valid, equipment must be returned, postage paid, to the dealer where it was purchased.



This product should not be thrown in the garbage.

In accordance with the European directive 2002/96/EC, electronic equipment at the end of their life must be collected and returned to an authorized recycling facility.