

# **JBC**

[www.jbctools.com](http://www.jbctools.com)

## **INSTRUCTION MANUAL**



## **Stands for HD Handles and Tweezers**

Ref. HD-SE / HDT-SD

# Packing List

**Stand** .....1 unit  
Ref. HD-SE

**Stand** .....1 unit  
Ref. HDT-SE  
*Includes: Cable flange (Ref.0010546)*



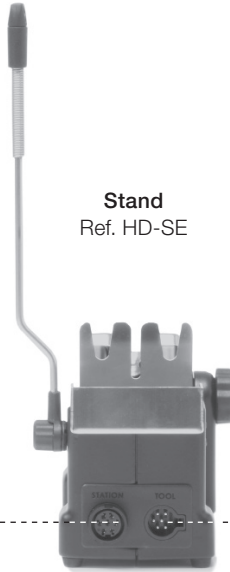
The following items should be included in each stand:

**Stand cable 1m** ..... 2 units  
Ref. 0011283

**Manual**.....1 unit  
Ref: 0021657



## Features



**Stand**  
Ref. HD-SE

*To HDE Control Unit  
using the Stand Cable*

*To T470 Handles*

The **HDT-SE** Stand requires two Heavy Duty stations (HDE) to manage the C470 cartridges individually thereby optimizing their thermal performance.



**Stand**  
Ref. HDT-SE

*To HDE Control Unit*

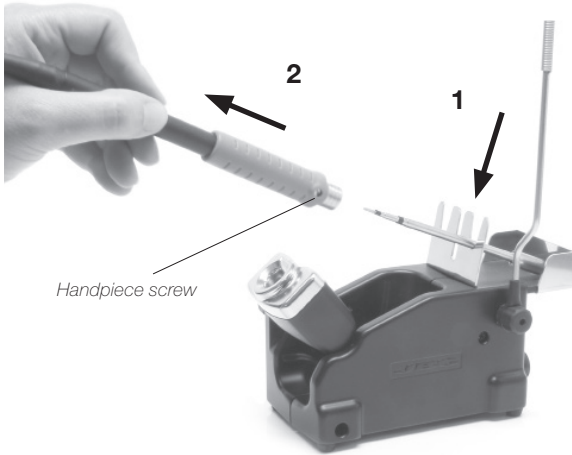
*To HDE Control Unit*

*To HD470  
Thermal Tweezers*

# Cartridge Extractor

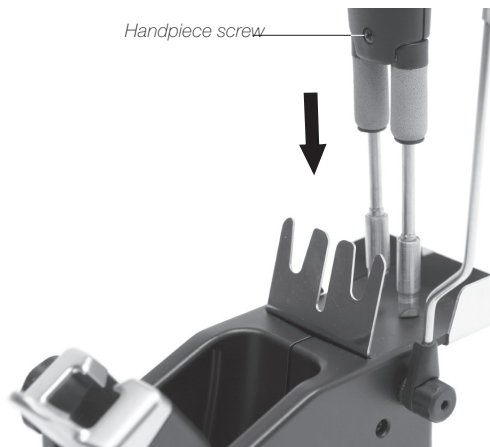
Follow these steps once you have loosened the handpiece screw.

1. Remove the cartridges using the extractor. Follow the "Placing cartridges" guidelines.



⚠ Make sure the cartridges have cooled down before replacing them.

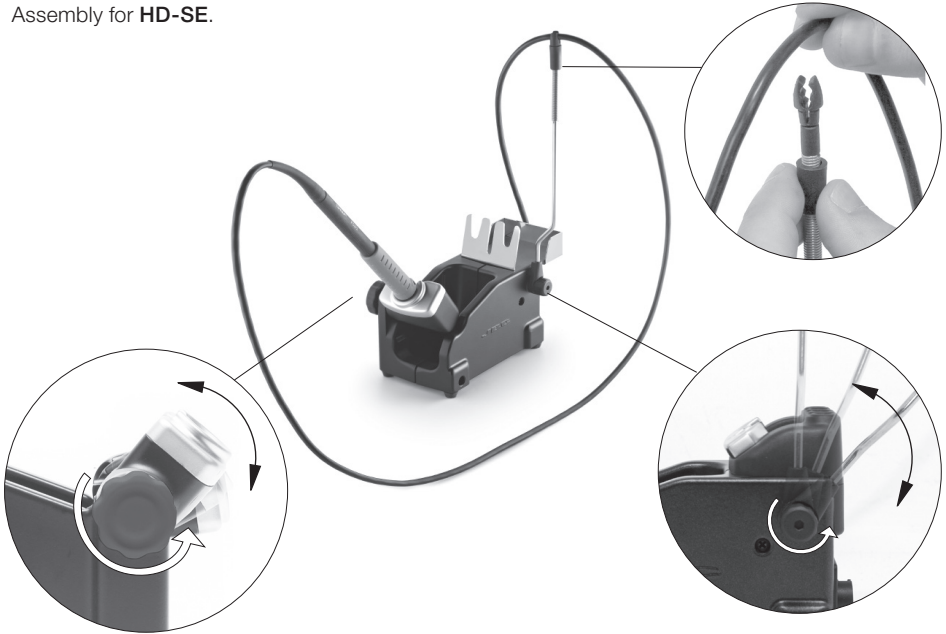
2. You can also use the extractor to insert the cartridges and align them.



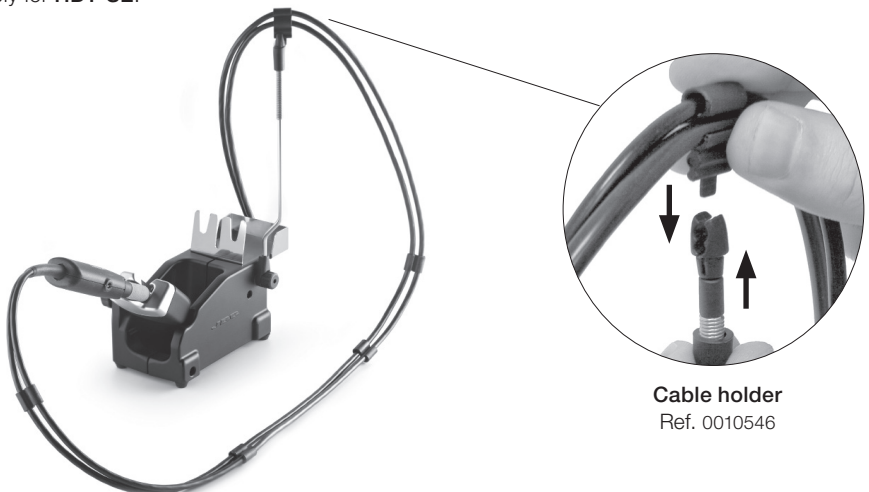
⚠ Tighten the screws for a correct use.

## Assembly of Cable Collector and Adjustable Tool Holder

Assembly for **HD-SE**.



Assembly for **HDT-SE**.



## Safety



**It is imperative to follow safety guidelines to prevent electric shock, injury, fire or explosion.**

- Do not use the stands for any purpose other than soldering or rework.
- The power cord must be plugged into approved bases. Be sure that it is properly grounded before use. When unplugging it, hold the plug, not the wire.
- Do not work on electrically live parts.
- The tool should be placed in the stand when not in use in order to activate the sleep mode. The soldering tip, the metal part of the tool and the stand may still be hot even when the station is turned off. Handle with care, including when adjusting the stand position.
- Avoid the contact of flux with skin or eyes to prevent irritation.
- Be careful with the fumes produced when soldering.
- Keep your workplace clean and tidy. Wear appropriate protection glasses and gloves when working to avoid personal harm.
- Utmost care must be taken with liquid tin waste which can cause burns.
- This appliance can be used by children over the age of eight and also persons with reduced physical, sensory or mental capabilities or lack of experience provided that they have been given adequate supervision or instruction concerning use of the appliance and understand the hazards involved. Children must not play with the appliance.
- Maintenance must not be carried out by children unless supervised.

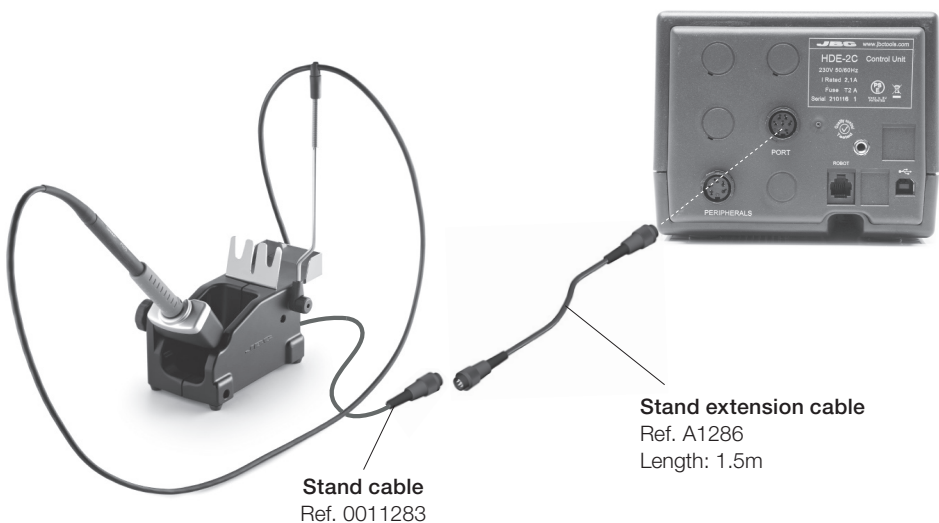
## Maintenance

Before carrying out maintenance or storage, always unplug the stand from the station and the tool.

- Use a damp cloth to clean the stand. Alcohol can be used only when cleaning the metal parts.
- Check periodically that the metal parts of the tool/stand are clean so that the station can check the tool's status.
- Periodically check all cables and tube connections.
- Replace any defective or damaged parts. Use original JBC spare parts only.
- Repairs should only be performed by a JBC authorized technical service.



## Accessories



# Specifications

## HD-SE

- Includes Sleep mode
- Net Weight 1.300 kg (2.87 lb)
- Package Weight 1.558 kg (3.43 lb)
- Package Dimensions 342 x 155 x 120 mm (13.46 x 6.10 x 4.72 in)

## HDT-SE

- Includes Sleep mode
- Net Weight 1.3411 kg (3.11 lb)
- Package Weight 1.689 kg (3.72 lb)
- Package Dimensions 342 x 155 x 120 mm (13.46 x 6.10 x 4.72 in)

Complies with CE standards  
ESD protected

# JBC

## Warranty

JBC's two-year warranty covers this equipment against all manufacturing defects, including the replacement of defective parts and labour. Warranty does not cover product wear or misuse. In order for the warranty to be valid, equipment must be returned, postage paid, to the dealer where it was purchased.

**Register your warranty within 30 days of purchase in [www.jbctools.com/productregistration](http://www.jbctools.com/productregistration)**



This product should not be thrown in the garbage.

In accordance with the European directive 2002/96/EC, electronic equipment at the end of their life must be collected and returned to an authorized recycling facility.



Manual in other languages available on our website

**[www.jbctools.com](http://www.jbctools.com)**