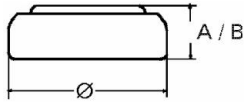


Type Number..... 373
Designation IEC..... SR68
System..... Silver oxide/ Zinc /
 NaOH - Electrolyte



Nominal Voltage..... 1,55 V
Typical Capacity C..... 28 mAh
 Load 39 kΩ, at 20°C down to 1.2 V

Weight (approx.)..... 0,50 g
Volume..... 0,12 ccm
Coding..... Date of Manufacturing
 Month/Year

Temperature Ranges min max.
 Storage..... 0°C 60°C
 Discharge..... 0°C 60°C

Dimensions min max.
 Diameter (Ø)..... 9,35 9,50
 Height (A/B)..... 1,47 1,65

Typical Capacities (at 20°C)

Discharge Type	Load	End Voltage: 1.2V	
Continuous 24h/d, 7d/w	39000 Ω	Time:	720 h
		Capacity :	28 mAh
		Energy:	43 mWh

No publication or circulation of data to third parties without consent of VARTA Consumer Batteries

All Data contained herein is for single cells For battery applications, performance data may vary from single cell data, depending on specific battery configuration