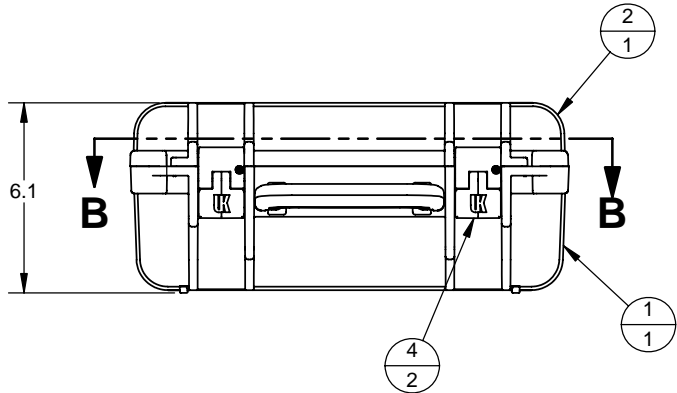
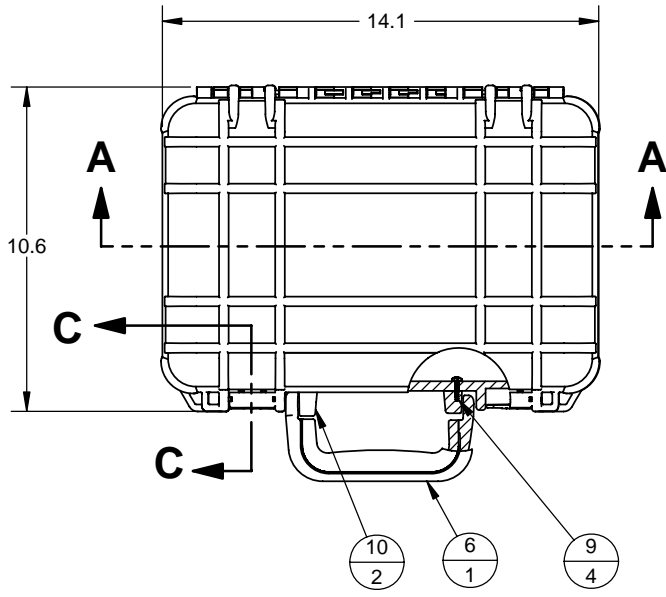


| REVISION | | | | |
|----------|-----|------------------------------|------|----------|
| REV | UCF | DESCRIPTION | DATE | APPROVED |
| A | 424 | INITIAL RELEASE | | |
| B | 451 | REPLACED PN 400031 W/ 400175 | | |



PRELIMINARY

| ITEM NO. | QTY. | PART NUMBER | DESCRIPTION |
|----------|------|-------------|---------------------------|
| 10 | 2 | 400175 | HANDLE PIVOT BLOCK |
| 9 | 4 | Z850673 | #8 x 3/4 Phil Screw |
| 8 | 1 | Z824348 | PANEL RING, 613 W/INSERTS |
| 7 | 1 | Z842386 | ORING, LID, 613 |
| 6 | 1 | 400186 | CASE HANDLE, SMALL |
| 5 | 2 | Z754416 | 916 LATCH ROD |
| 4 | 2 | 600010 | ASSY, CASE LATCH |
| 3 | 1 | Z 764428 | 613 HINGE PIN |
| 2 | 1 | 400121 | LID, 613 |
| 1 | 1 | 400122 | BOTTOM, 613 |

UNLESS OTHERWISE SPECIFIED:
 DIMENSIONS ARE IN INCHES
 TOLERANCES:
 ANGULAR: ± 1°
 X ±.1
 XX ±.01
 XXX ±.006

INTERPRET GEOMETRIC TOLERANCING PER:
 MATERIAL:
 FINISH:
 DO NOT SCALE DRAWING

| NAME | DATE |
|-----------|---------|
| J. BURKE | 5/17/06 |
| CHECKED | |
| ENG APPR. | |
| MFG APPR. | |
| Q.A. | |
| COMMENTS: | |

UK UK International

TITLE: ASSY, 613 ULTRA CASE

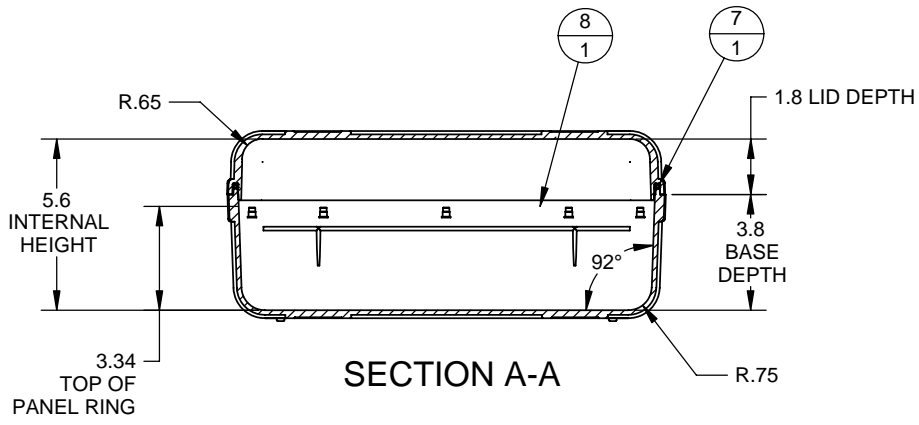
| | | |
|----------|----------|----------|
| SIZE | PART NO. | REV |
| B | 800019 | B |

SCALE: 1:4 SHEET 1 OF 2

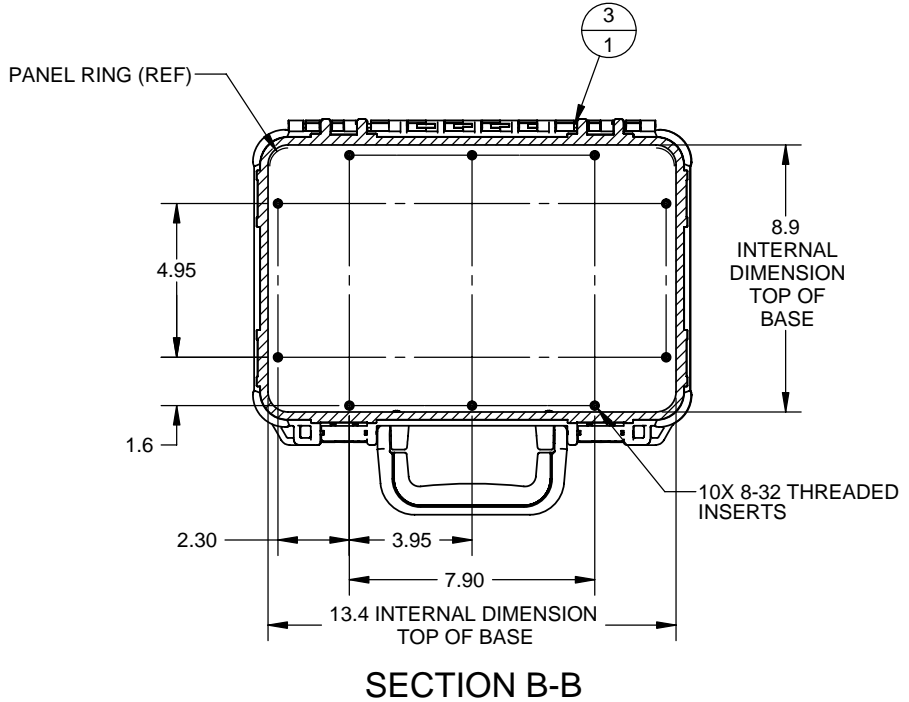
PROPRIETARY AND CONFIDENTIAL
 THE INFORMATION CONTAINED IN THIS DRAWING IS THE SOLE PROPERTY OF UNDERWATER KINETICS. ANY REPRODUCTION IN PART OR AS A WHOLE WITHOUT THE WRITTEN PERMISSION OF UNDERWATER KINETICS IS PROHIBITED.

8 7 6 5 4 3 2 1

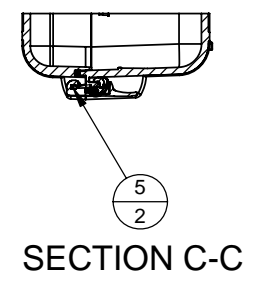
D



C



B



D

C

B

A

A

8 7 6 5 4 3 2 1

| | | | | | |
|-----------|----------|---------|--------------------------------|----------|--------------|
| | NAME | DATE | UK UK International | | |
| DRAWN | J. BURKE | 5/17/06 | | | |
| CHECKED | | | TITLE: ASSY, 613 ULTRA CASE | | |
| ENG APPR. | | | | | |
| MFG APPR. | | | | | |
| Q.A. | | | | | |
| COMMENTS: | | | SIZE | PART NO. | REV |
| | | | B | 800019 | B |
| | | | SCALE: 1:1 | | SHEET 2 OF 2 |